

TOMORROW'S
MANUFACTURING
LEADERSHIP
TODAY

Technical Bulletin

Bulletin Number: 260 Revision Number: R-02

Release Date: January 17, 1984 Revision Date: August 10, 1994

SUBJECT: HONOR GARD SECURITY SYSTEM

MODELS AFFECTED: All DNCB Dixie-Narco Venders.

SERIAL BREAKS: See Index.

REASON: To provide a way to install the honor gard security bag system in Dixie-Narco venders.

INDEX

- A) All Coke VRV Landscape Venders 0001-6123BR and higher. Pages A1 to A3
 All Coke Landscape 0001-2949DK to 0001-3233CP and 0001-6000CO to 0001-6123BR.
 6 & 8 Select Wide Redesigned Pepsi Magnum Circular Venders 0001-3101AN and higher.
 All Narrow Redesigned Pepsi Magnum Circular Venders 0001-6095CQ and higher.
 6 & 8 Select Wide Pepsi Magnum Circular Venders 0001-2858DJ to 0001-3101AN.
 All Dr. Pepper D3 Venders 0001-3007CL and higher.
 All 7UP B7 Venders 0001-3028AM and higher.
 All Generic Round Venders 0001-3036AM and higher.
 All Cold Drink FLS Venders 0001-6130DQ and higher.
 All Can Display Venders 0001-3091DM and higher.
 6 & 8 Select RC and Veryfine Inverted "L" Venders 0001-6169AS and higher.
- B) 10 Select Wide Redesigned Pepsi Magnum Circular Venders 0001-3101AN and higher Pages B1 thru B3
 10 Select RC and Veryfine Inverted "L" Venders 0001-6169AS and higher.
- C) 6, 8, & 10 Select Pepsi Magnum Circular Venders prior to 0001-3101AN. Pages C1 and C2
 (Includes production run 3102AN)
 6, 8, & 10 Select Pepsi Magnum Venders 0001-2679DH and higher.
- D) All Flat Front DNCB Coke Venders 0001-2392CE to 0001-2949DK. Pages D1 thru D3
 All Flat Front DNCB X-Style Pepsi Venders 0001-2392CE to 0001-2679DH.
 All Flat Front DNCB Dr. Pepper Venders 0001-2392CE to 0001-2768DI.
 All Flat Front 7UP Venders 0001-2392CE to 0001-3028AM.
 All Century II DNCB Dr. Pepper Venders 0001-2768DI to 0001-3007CL.
 All Cold Drink X-Style Venders 0001-2392CE to 0001-6103DQ.
 All Can Display X-Style Venders 0001-2392CE to 0001-3091DM.
- E. Honor Gard Security Door Pages E1 and E2

TB 260
Page 1 of 1

A

HONOR GARD SYSTEM IN

- 1) All Coke VRV Landscape Venders 0001-6123BR & Higher.
- 2) All Coke Landscape Venders 0001-2949DK to 0001-3233CP & 0001-6000CO to 0001-6123BR.
- 3) 6 & 8 Select Wide Redesigned Pepsi Magnum Circular Venders 0001-3101AN & Higher.
- 4) All Narrow Redesigned Pepsi Magnum Circular Venders 0001-6095CQ and Higher.
- 5) 6 & 8 Select Wide Pepsi Magnum Circular Venders 0001-2858DJ to 0001-3101AN.
- 6) All Dr. Pepper D3 Venders 0001-3007CL & Higher.
- 7) All 7Up B7 Venders 0001-3028AM & Higher.
- 8) All Generic Round Venders 0001-3036AM & Higher.
- 9) All Cold Drink FLS Venders 0001-6103DQ & Higher.
- 10) All Can Display Venders 0001-3091DM & Higher.
- 11) 6 & 8 Select RC and Veryfine Inverted "L" Venders 0001-6169AS & higher.

A) For venders listed above, serialized 0001-6065AQ and higher, order:

Multi Change Chute Assembly Kit

Kit Contents:

1 - 801,806,950.21	Hopper
1 - 432,010,850.03	W/A Multi Change Chute
2 - 901,100,540.01	1/8 Pop Rivet, Black
8 - 900,301,700.11	Screw, Sems #6-32 x 3/8

B) For venders listed above, serialized 0001-6000CO to 0001-6065AQ, order:

Multi Change Chute Assembly Kit

Kit Contents:

1 - 432,150,030.43	Access Door
1 - 801,806,950.21	Hopper
1 - 432,010,850.03	W/A Multi Change Chute
2 - 901,100,540.01	1/8 Pop Rivet, Black
8 - 900,301,700.11	Screw, Sems #6-32 x 3/8

C) For venders listed above, serialized prior to 0001-3233CP, order:

432,010,100.14 Multi Change Chute Assembly Kit

Kit Contents:

1 - 432,010,200.33	W/A Multi Change Chute
2 - 901,100,540.01	1/8 Pop Rivet, Black
8 - 900,301,700.11	Screw, Sems #6-32 x 3/8

For installation see pages A2 and A3.

To install the Multi Change Honor Gard System:

Note: Multi Change Chute W/A, pop rivets, sems screws and crown puller cover are available from Dixie-Narco. All other parts are from Honor Gard, 720 Bonnie Lane, Elk Grove Village, IL 60007 (1-800-621-6564).

1. Align the four (4) holes in the small Service Lock Housing from Honor Gard with the four (4) holes in the base of the Multi Change Chute. (See figure 1 on page A3.) The housing mounts to the bottom of the Multi Change Chute.
2. Position the Lock Housing so the hole for the Route Lock is facing the flange of the Multi Change Chute Base. (See figure 1 on page A3.)
3. **Note:** Two of the pilot holes in the Lock Housing will need to be opened further to allow the installation of securing screws.
4. Secure the Lock Housing in position with four (4) #6-32 x 3/8 sems screws.
5. Install the Route Lock from Honor Gard in the Lock Housing.
6. Align the four (4) holes in the plastic Multi Change Housing from Honor Gard with the four (4) holes in the base of the Multi Change Chute. (See figure 1 on page A3.) The housing mounts to the bottom of the Multi Change Chute.
7. Secure the Multi Change Housing in position with four (4) #6-32 x 3/8 sems screws.
8.
 - A. On venders serialized 0001-6065AQ and higher, remove the coin hopper and chute from the access door and go to step 9A.
 - B. On venders serialized 0001-6000CO to 0001-6065AQ, remove the access door and go to step 9B.
 - C. On venders prior to 0001-3233CP, remove the lower coin chute from the access door and go to step 9C.
9.
 - A. On venders serialized 0001-6065AQ and higher, install the coin hopper only (802,806,950.21) and go to step 10A.
 - B. On venders serialized 0001-6000CO to 0001-6065AQ, install the new access door (432,150,030.43) and coin hopper only (801,806,950.21) and go to step 10B.
 - C. On venders prior to 0001-3233CP, go to step 10C.
10.
 - A. & B. On venders serialized 0001-6065AQ and higher, install the w/a Multi Change Chute in position so the top tab goes in the slot and behind the access door. (See figure 2, area A on page A3.) Go to step 11.
 - C. On venders prior to 0001-3233CP, install the w/a Multi Change Chute in position, loosely attaching the Multi Change Chute to the access door, with the existing screw, through the top slotted hole of the chute. (See figure 3 on page A3.)
11. Align the two holes in the side of the Multi Change Chute with the holes in the access door. (See figures 2 or 4, B and C on page A3.)
12. Secure the top holes (B) in position with a pop rivet.
13. Align the bottom hole (C) of the Multi Change Chute with the forward hole of the access door. **Note:** The bottom hole on the access door has two holes that overlap. Secure the Multi Change Chute so its hole is aligned with the forward position hole of the access door. (See figures 2 or 4, C on page A3.)

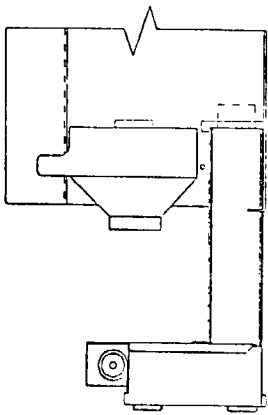


Figure 1

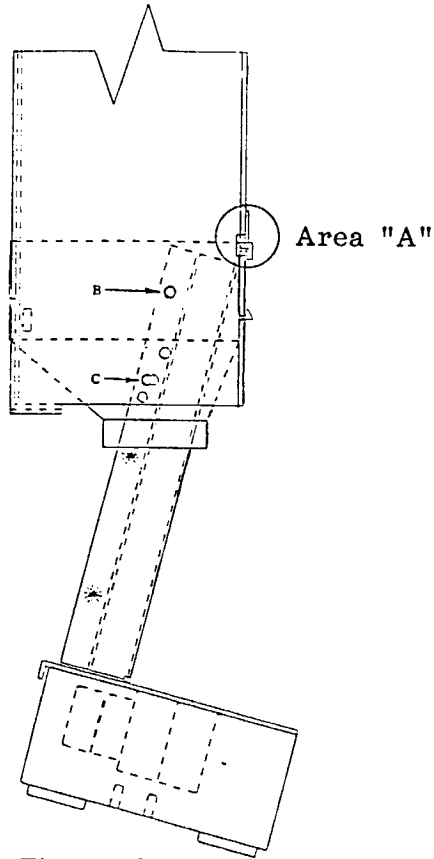


Figure 2

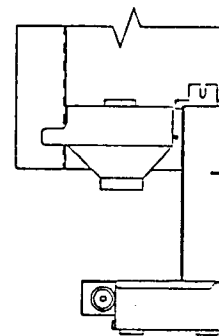


Figure 3

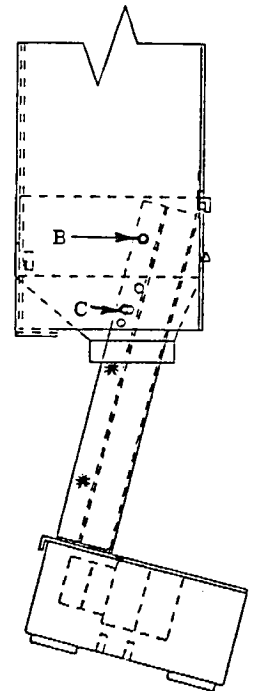


Figure 4

B

HONOR GARD SYSTEM IN

- 1) 10 Select Wide Redesigned Pepsi Magnum Circular Venders 0001-3101AN & Higher.
- 2) 10 Select RC and Veryfine Inverted "L" Venders 0001-6169AS & higher.

A) For venders listed above, serialized 0001-6065AQ and higher, order:

Multi Change Chute Assembly Kit

Kit Contents:

1 - 801,806,950.21	Hopper
1 - 479,010,300.03	W/A Multi Change Chute
1 - 480,050,400.13	Coin Hopper Extension (Venders 0001-6141CR & higher)
or	
1 - 500,050,000.03	Coin Hopper Extension (Venders 0001-6065AQ to 0000-6141CR)
4 - 901,100,540.13	1/8 Pop Rivet, Black
8 - 900,301,700.11	Screw, Sems #6-32 x 3/8

B) For venders listed above, serialized 0001-6000CO to 0001-6065AQ, order:

Multi Change Chute Assembly Kit

Kit Contents:

1 - 432,150,030.43	Access Door
1 - 801,806,950.21	Hopper
1 - 479,010,300.03	W/A Multi Change Chute
1 - 480,050,400.13	Coin Hopper Extension
4 - 901,100,540.01	1/8 Pop Rivet, Black
8 - 900,301,700.11	Screw, Sems #6-32 x 3/8

C) For venders listed above, serialized prior to 0001-3233CP, order:

479,010,200.04 Multi Change Chute Assembly Kit

Kit Contents:

1 - 479,010,100.23	W/A Multi Change Chute
2 - 901,100,540.01	1/8 Pop Rivet, Black
8 - 900,301,700.11	Screw, Sems #6-32 x 3/8

For installation see pages B2 and B3.

To install the Multi Change Honor Gard System:

- Note:** Multi Change Chute W/A, pop rivets, sems screws and crown puller cover are available from Dixie-Narco. All other parts are from Honor Gard, 720 Bonnie Lane, Elk Grove Village, IL 60007 (1-800-621-6564).
1. Align the four (4) holes in the small Service Lock Housing from Honor Gard with the four (4) holes in the base of the Multi Change Chute. (See figure 1 on page B3.) The housing mounts to the bottom of the Multi Change Chute.
 2. Position the Lock Housing so the hole for the Route Lock is facing the flange of the Multi Change Chute Base. (See figure 1 on page B3.)
 3. **Note:** Two of the pilot holes in the Lock Housing will need to be opened further to allow the installation of securing screws.
 4. Secure the Lock Housing in position with four (4) #6-32 x 3/8 sems screws.
 5. Install the Route Lock from Honor Gard in the Lock Housing.
 6. Align the four (4) holes in the plastic Multi Change Housing from Honor Gard with the four (4) holes in the base of the Multi Change Chute. (See figure 1 on page B3.) The housing mounts to the bottom of the Multi Change Chute.
 7. Secure the Multi Change Housing in position with four (4) #6-32 x 3/8 sems screws.
 8.
 - A. On venders serialized 0001-6065AQ and higher, remove the coin hopper and chute from the access door and go to step 9A.
 - B. On venders serialized 0001-6000CO to 0001-6065AQ, remove the access door and go to step 9B.
 - C. On venders prior to 0001-3233CP, remove the lower coin chute from the access door and go to step 9C.
 9.
 - A. On venders serialized 0001-6065AQ and higher, install the coin hopper only (802,806,950.21) and go to step 10A.
 - B. On venders serialized 0001-6000CO to 0001-6065AQ, install the new access door (432,150,030.43) and coin hopper only (801,806,950.21) and go to step 10B.
 - C. On venders prior to 0001-3233CP, go to step 10C.
 10.
 - A. & B. On venders serialized 0001-6065AQ and higher, install the w/a Multi Change Chute in position so the top tab goes in the slot and behind the access door. (See figure 2, area A on page B3.) Go to step 11.
 - C. On venders prior to 0001-3233CP, install the w/a Multi Change Chute in position, loosely attaching the Multi Change Chute to the access door, with the existing screw, through the top slotted hole of the chute. (See figure 3 on page B3.)
 11. Align the two holes in the side of the Multi Change Chute with the holes in the access door. (See figures 2 or 4, B and C on page B3.)
 12. Secure the top holes (B) in position with a pop rivet.
 13. Align the bottom hole (C) of the Multi Change Chute with the rear hole of the access door. **Note:** The bottom hole on the access door has two holes that overlap. Secure the Multi Change Chute so its hole is aligned with the rear position hole of the access door. (See figures 2 or 4, C on page B3.)
 14. On venders serialized 0001-6000CO and higher, you will need to install the coin hopper extension.
 15. Open the access door.

16. A. In venders serialized 0001-6141CR and higher, place the coin hopper extension in position, as shown in figures 5 and 6 below. Secure the coin hopper extension in position with the two pop rivets. Note: The flat part of the pop rivet should be on the side of the access door close to the wiring.
- B. In venders serialized 0001-6065AQ to 0001-6141CR, secure the coin hopper extension to the two carriage bolts in the vandal panel as shown in figure 7.

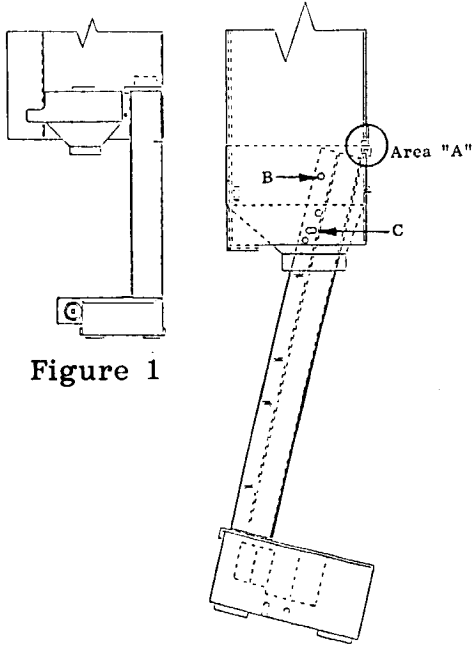


Figure 1

Figure 2

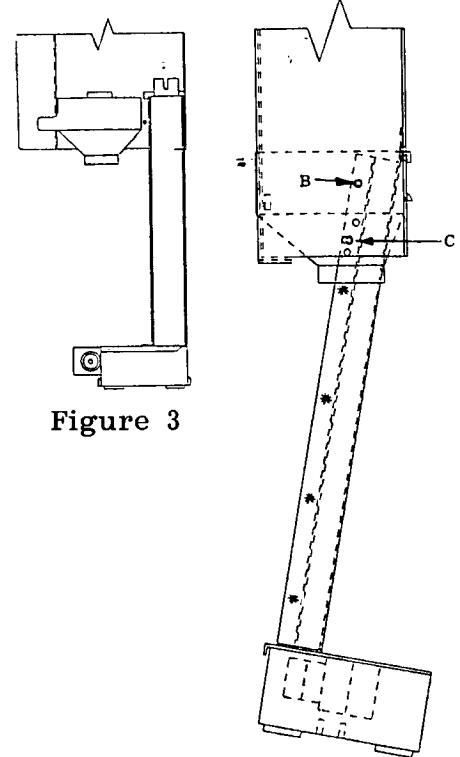


Figure 3

Figure 4

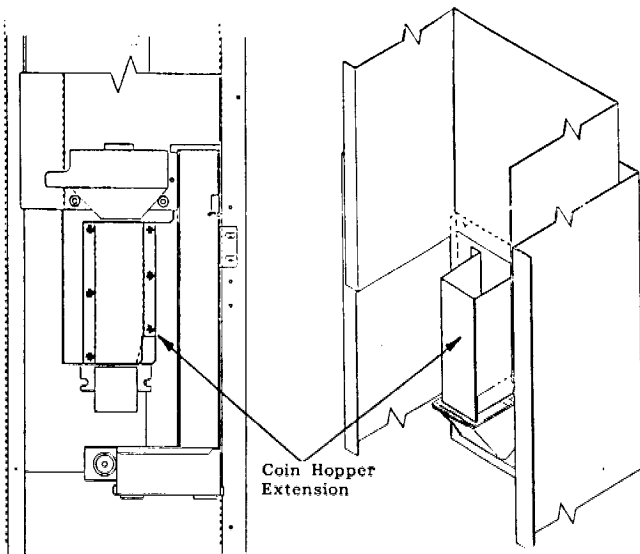


Figure 5

Figure 6

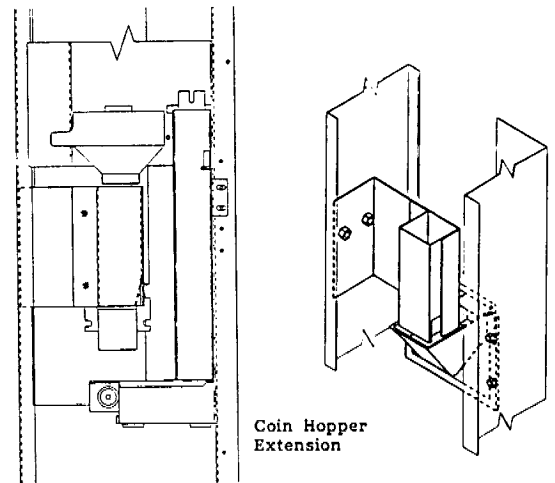


Figure 7

Figure 8

C

HONOR GARD SYSTEM IN

- 1) 6, 8, & 10 Select Pepsi Magnum Circular Venders Prior to 0001-3101AN. (Includes production run 3102AN)
- 2) 6, 8, & 10 Select Pepsi Magnum Venders 0001-2679DH and Higher.

A) For venders listed above, order:

360,011,300.14

Multi Change Chute Assembly Kit

Kit Contents:

1 - 360,011,200.33

W/A Multi Change Chute

2 - 901,100,600.01

3/16 Pop Rivet, Steel

8 - 900,301,700.11

Screw, Sems #6-32 x 3/8

1 - 360,010,180.13

Crown Puller Cover Plate

To install the Multi Change Honor Gard System:

Note: Multi Change Chute W/A, pop rivets, sems screws and crown puller cover are available from Dixie-Narco. All other parts are from Honor Gard, 720 Bonnie Lane, Elk Grove Village, IL 60007 (1-800-621-6564).

1. Align the four (4) holes in the small Service Lock Housing from Honor Gard with the four (4) holes in the base of the Multi Change Chute. (See figure 1 on page C2.) The housing mounts to the bottom of the Multi Change Chute.
2. Position the Lock Housing so the hole for the Route Lock is facing away from the flange of the Multi Change Chute Base. (See figure 1 on page C2.)
3. Note: Two of the pilot holes in the Lock Housing will need to be opened further to allow the installation of securing screws.
4. Secure the Lock Housing in position with four (4) #6-32 x 3/8 sems screws.
5. Install the Route Lock from Honor Gard in the Lock Housing.
6. Align the four (4) holes in the plastic Multi Change Housing from Honor Gard with the four (4) holes in the base of the Multi Change Chute. (See figure 1 on page C2.) The housing mounts to the bottom of the Multi Change Chute. When in the correct position, the housing will be flush with three sides of the Multi Change Chute base.
7. Secure the Multi Change Housing in position with four (4) #6-32 x 3/8 sems screws.
8. Remove the lower coin chute from the access door.
9. Install the w/a Multi Change Chute in position, loosely attaching the Multi Change Chute to the access door, with the existing screw, through the top slotted hole of the chute. (See figure 2 on page C2.)
10. Align the two holes in the flange of the Multi Change Chute with the holes in the access door. (See figure 2 on page C2.) Note: The access door goes between the chute and the chute flange. (See figure 3 on page C2.)
11. Secure the chute in position with the pop rivets.
12. Tighten the screw you installed in step 9.
13. Remove the crown catcher housing inside the main door.
14. Install the crown puller cover.

Top Slotted
Hole

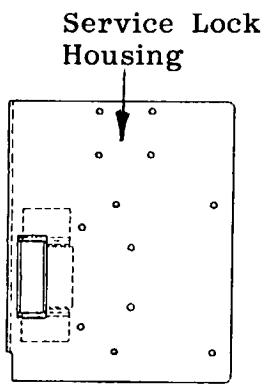


Figure 1

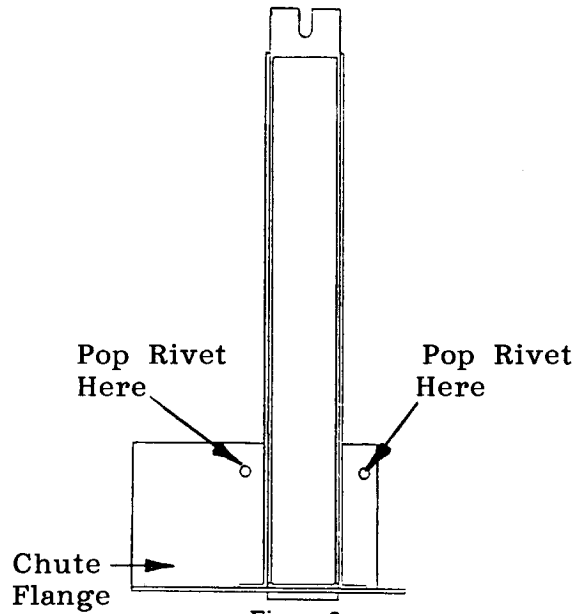


Figure 2

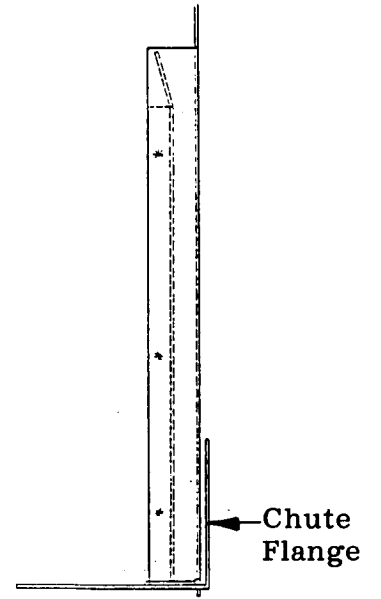


Figure 3

D

HONOR GARD SYSTEM IN

- 1) All Flat Front DNCB Coke Venders 0001-2392CE to 0001-2949DK.
- 2) All Flat Front DNCB X-Style Pepsi Venders 0001-2392CE to 0001-2679DH.
- 3) All Flat Front DNCB Dr. Pepper Venders 0001-2392CE to 0001-2768DI.
- 4) All Flat Front DNCB 7UP Venders 0001-2392CE to 0001-3028AM.
- 5) All Century II DNCB Dr. Pepper Venders 0001-2768DI to 0001-3007CL.
- 6) All Cold Drink X-Style Venders 0001-2392CE to 0001-6103DQ.
- 7) All Can Display X-Style Venders 0001-2392CE to 0001-3091DM.

A) For venders listed above, order:

267,014,800.04

Multi Change Chute Assembly Kit

Kit Contents:

1 - 267,015,500.23
4 - 901,100,600.01
8 - 900,301,700.11

W/A Multi Change Chute
3/16 Pop Rivet, Steel
Screw, Sems #6-32 x 3/8

To install the Multi Change Honor Gard System:

Note: Multi Change Chute W/A, pop rivets, sems screws and crown puller cover are available from Dixie-Narco. All other parts are from Honor Gard, 720 Bonnie Lane, Elk Grove Village, IL 60007 (1-800-621-6564).

1. Align the four (4) holes in the small Service Lock Housing from Honor Gard with the four (4) holes in the base of the Multi Change Chute. (See figure 1 on page D3.) The housing mounts to the bottom of the Multi Change Chute.
2. Position the Lock Housing so the hole for the Route Lock is facing the flange of the Multi Change Chute Base. (See figure 1 on page D3.)
3. Note: Two of the pilot holes in the Lock Housing will need to be opened further to allow the installation of securing screws.
4. Secure the Lock Housing in position with four (4) #6-32 x 3/8 sems screws.
5. Install the Route Lock from Honor Gard in the Lock Housing.
6. Align the four (4) holes in the plastic Multi Change Housing from Honor Gard with the four (4) holes in the base of the Multi Change Chute. (See figure 1 on page D3.) The housing mounts to the bottom of the Multi Change Chute. When in the correct position, the housing will be flush with three sides of the Multi Change Chute base.
7. Secure the Multi Change Housing in position with four (4) #6-32 x 3/8 sems screws.
8. Remove the existing cash box.
9. Remove the lower coin chute from the access door.
10. You will need to cut a notch in the bottom flange of the access door.
 - A) Measure 3 1/2" from the latch side outer edge of the access door and mark.
 - B) Measure 5 1/4" from the latch side outer edge of the access door and mark.

Important: The distance between the two marks should be 1 3/4".

TB 260

Page D1 of D3

11. Cut a notch in the flange at the marks made in step 10.
12. Slide the Honor Gard Chute in position on the access door with the coin chute from the Honor Gard Chute on the same side as the changer and the chute flange on the opposite side of the access door. (See figure 3, page D3.)
13. Slide the Honor Gard Chute up so the tab with the top slotted hole on the coin chute goes behind the coin changer. (See figure 2, page D3.)
14. Align the Honor Gard Chute with the coin changer chute.
15. Mark the bottom of the (2) two 7/32" diameter holes of the chute flange on the access door using the Honor Gard Chute as a template. (See figure 2, page D3.)
16. Remove the Honor Gard Chute.
17. Drill (2) two 7/32" diameter holes on the locations marked in step 15.
18. Place the Honor Gard Chute back in position.
19. Secure in position with (2) two 3/16" pop rivets.
20. Remove the coin changer.
21. Locate the top slotted hole in the Honor Gard Chute. (See figure 2, page D3.)
22. Drill (1) one 7/32" diameter hole through the access door at the slotted hole.
23. Secure with (1) one 3/16" pop rivet. Important: Flat side of the pop rivet needs to be on the changer side of the access door.
24. Note that the main door horizontal bulkhead does not have a notch to allow the access door to close with the Honor Gard Chute installed.
25. Partially close the access door with the Honor Gard Chute installed, and mark the area on the main door bulkhead where the Honor Gard Chute hits.
26. Cut a notch in the horizontal bulkhead at the marks made in step 25. Ensure the notch is large enough to allow the access door to completely close with the Honor Gard Chute installed.
27. Install the coin changer.

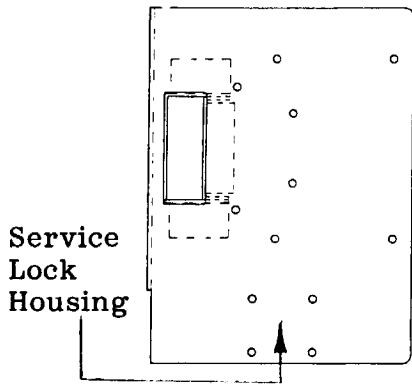


Figure 1

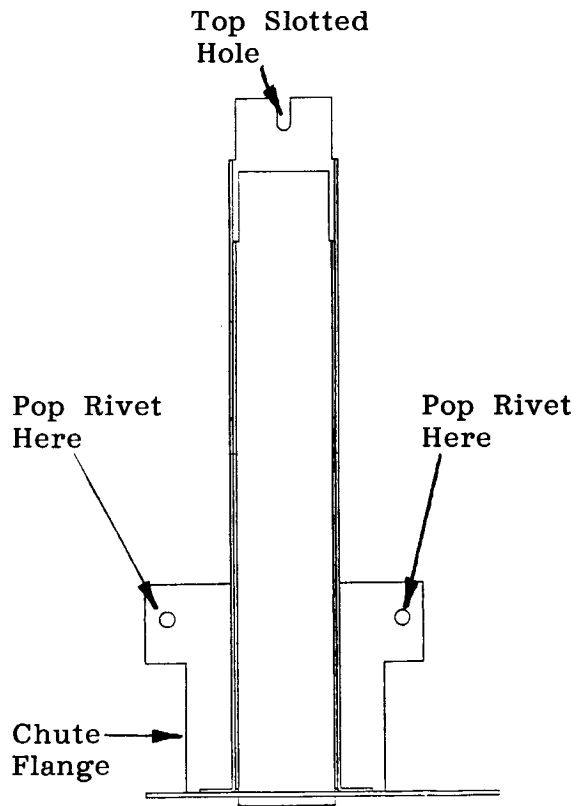


Figure 2

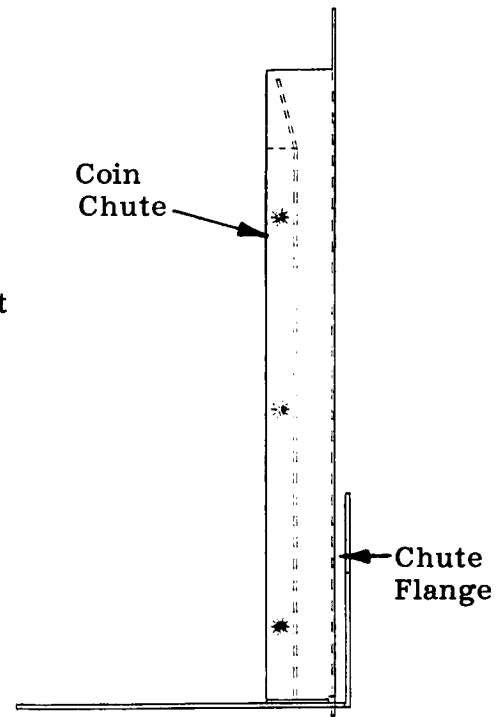


Figure 3

E

HONOR GARD SECURITY DOOR

- 1) All Coke Non VRV Landscape Venders 0001-2949DN to 0001-6123BR.
- 2) 6 & 8 Select Wide Redesigned Pepsi Magnum Circular Venders 0001-3101AN and higher.
- 3) All Narrow Redesigned Pepsi Magnum Circular Venders 0001-6095CQ and higher.
- 4) All Non VRV Dr. Pepper D3 Venders 0001-3007CL and higher.
- 5) All Generic Round Venders 0001-3036AM and higher.
- 6) All Cold Drink FLS Venders 0001-6103DQ and higher.
- 7) All Can Display Venders 0001-3091DM and higher.

Note: VRV style venders have a vault security door factory installed and do not need a security door kit.

Order: 480,010,500.04 Security Door, Kit

Kit Contents:	1 - 480,010,600.03	w/a Security Door
	1 - 900,201,450.01	Carriage Bolt, ¼-20x½
	1 - 900,800,670.01	Keps Nut, ¼-20
	2 - 900,301,500.01	Screw, Phil Pan #8-18x½
	1 - 399,010,120.03	Latch (for use with cash box)
	1 - 900,500,261.11	Shoulder Screw
	1 - 900,800,500.01	Keps Nut, 8-32
	1 - 480,010,050.13	Latch (for use with bag - pop rivet on)
	1 - 901,100,390.01	Pop Rivet, ¼"

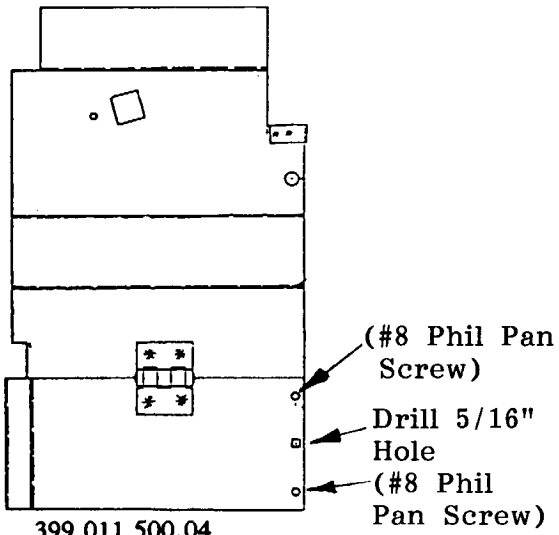
- 1) 6 & 8 Select Wide Pepsi Magnum Circular Venders prior to 0001-3101AN, but including run 3102AN.
- 2) All Flat Pepsi Magnum Venders.

Order: 399,011,400.04 Security Door, Kit

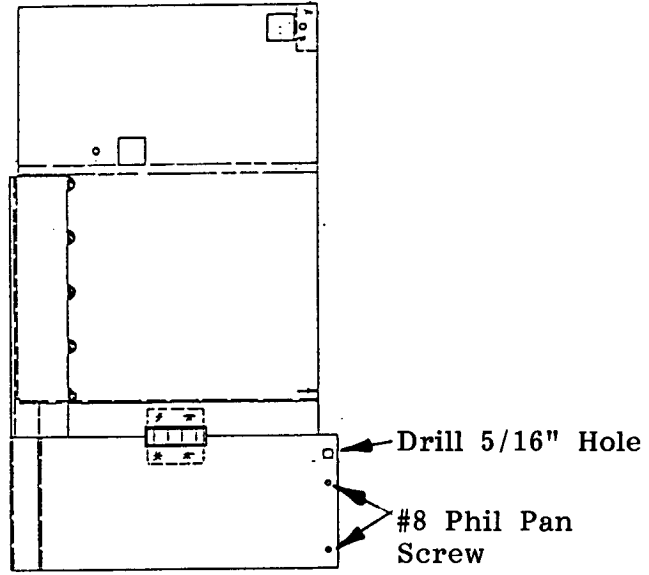
Kit Contents:	1 - 399,011,500.04	w/a Security Door
	1 - 900,201,450.01	Carriage Bolt, ¼-20x½
	1 - 900,800,670.01	Keps Nut, ¼-20
	2 - 900,301,500.01	Screw, Phil Pan #8-18x½
	1 - 360,050,440.03	Latch
	1 - 900,800,500.01	Keps Nut, 8-32
	1 - 900,500,261.11	Shoulder Screw

To Install:

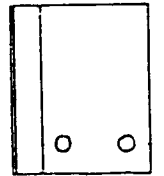
1. Locate and remove the two carriage bolts and nuts from the bottom of the vandal panel (left side of the main door).
2. Place the security door in position so the two holes in the bottom left end of the security door (see figure 3, page E2) line up with the two holes you removed the bolts and nuts from in step 1.
3. Secure the security door in position with the carriage bolts and keps nuts removed in step 1.
4. Using the security door as a template, drill a 5/16" hole as shown in figures 1 and 2, page E2.
5. Install a ¼-20x½ carriage bolt in the hole drilled in step 4 and secure with a ¼-20 keps nut.
6. Install two #8 self drilling screws to further secure the door, as shown in figures 1 and 2, page E2.



399,011,500.04
Figure 1



480,010,600.03
Figure 2



Bottom left end
Security Door
Figure 3